

**KERALA FIBRE OPTIC NETWORK &
RELIABLE COMMUNICATION AND DATA ACQUISITION
NETWORK**

**USER MANUAL
FOR
IP CONFIGURATION ON
END OFFICE PC for INTERNET**

Scope of this document:

This document is intended to be used for IP and Network configuration in End Offices PC for accessing Internet.

Table of Contents

Prerequisites	4
IP Configuration	4
1. Windows PC.....	4
2. Linux PC.....	8
Helpdesk Support.....	11

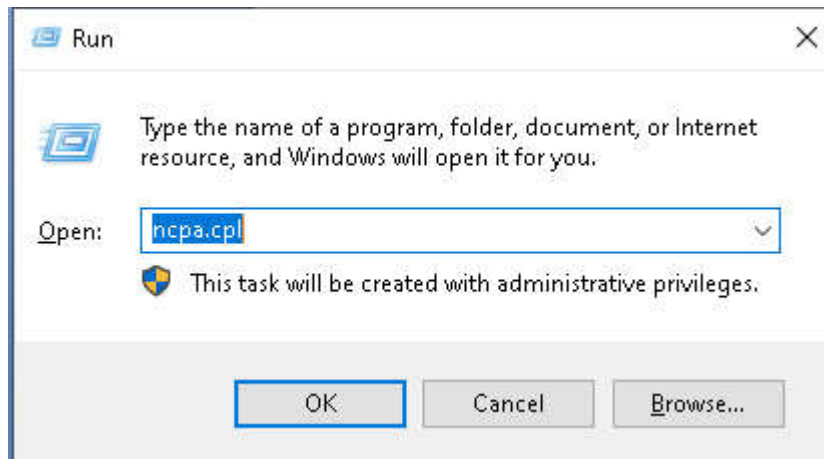
Prerequisites

1. Ensure ONT Power LED status is glowing.
2. Ensure one end of the Ethernet cable is connected to ONT port labeled as
 - a. GbE-1 or GbE-2 (for Tejas TJ2100-11G ONT)
 - b. LAN-1 or LAN2 (for Alphon AONT-1420)
3. Ensure other end of the Ethernet cable is connected to LAN Port of the PC.
4. Check the LED status in the connected ONT port. A green light means Ethernet Link is up and connected to End Office PC.

IP Configuration

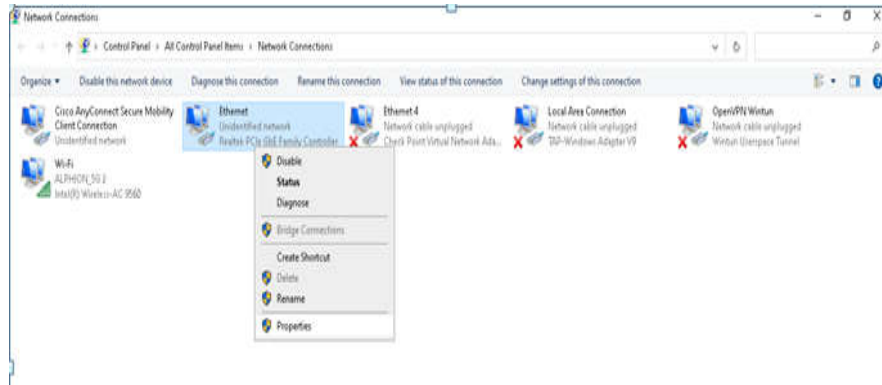
1. Windows PC

1. Press “**Windows + R**” key from windows PC keyboard. Then type “**ncpa.cpl**” in the Run window and click ok.

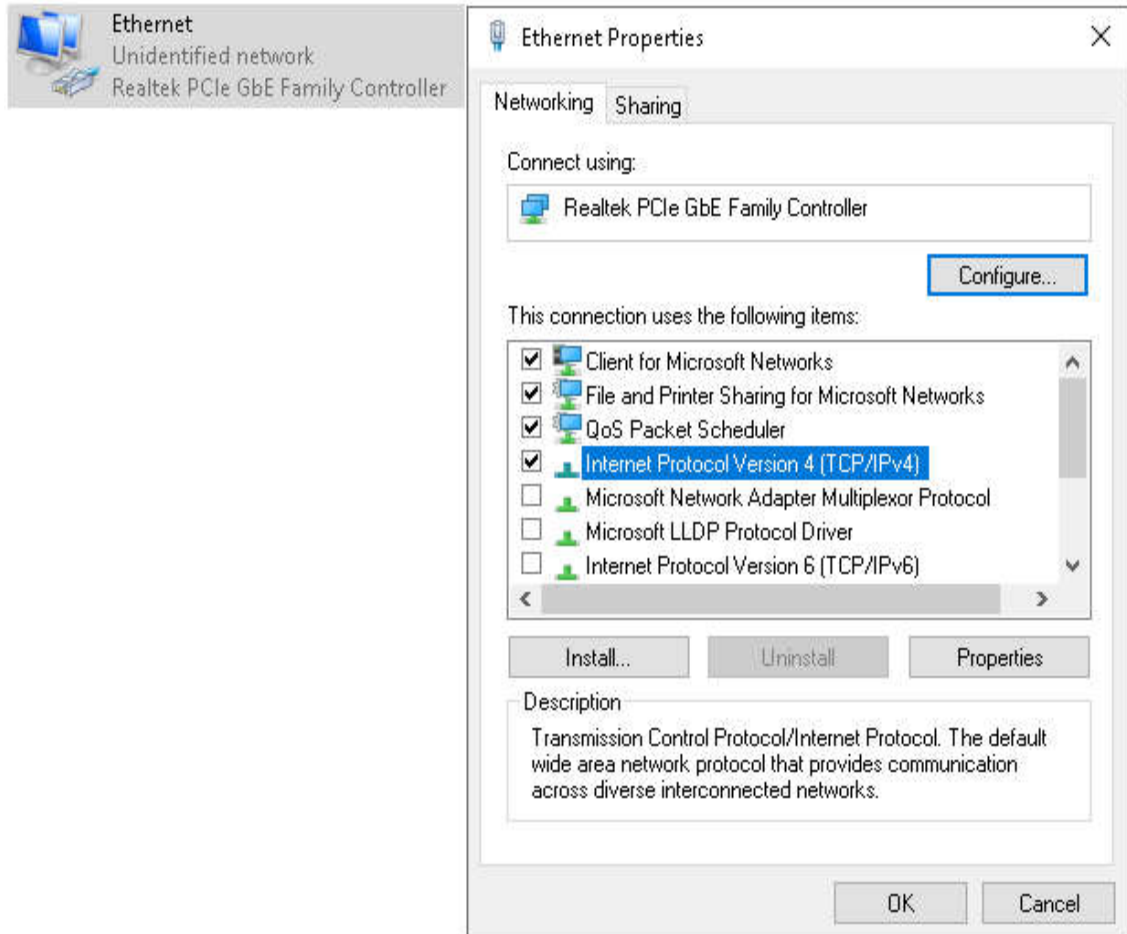


Network connections window will open.

2. Right Click on the Ethernet interface (LAN) and select the properties icon as shown in the fig below.



3. Select Internet Protocol version 4(TCP/IPv4) and click on properties to configure the Static IP.



4. Refer “**KFON End Office VLAN & IP Schema**” document and get the below details corresponding to the END Office.

For Example:

End Office Name: Kerala State Productivity Council, Kalamassery

Customer End IP- 100.112.23.114 (IP address)

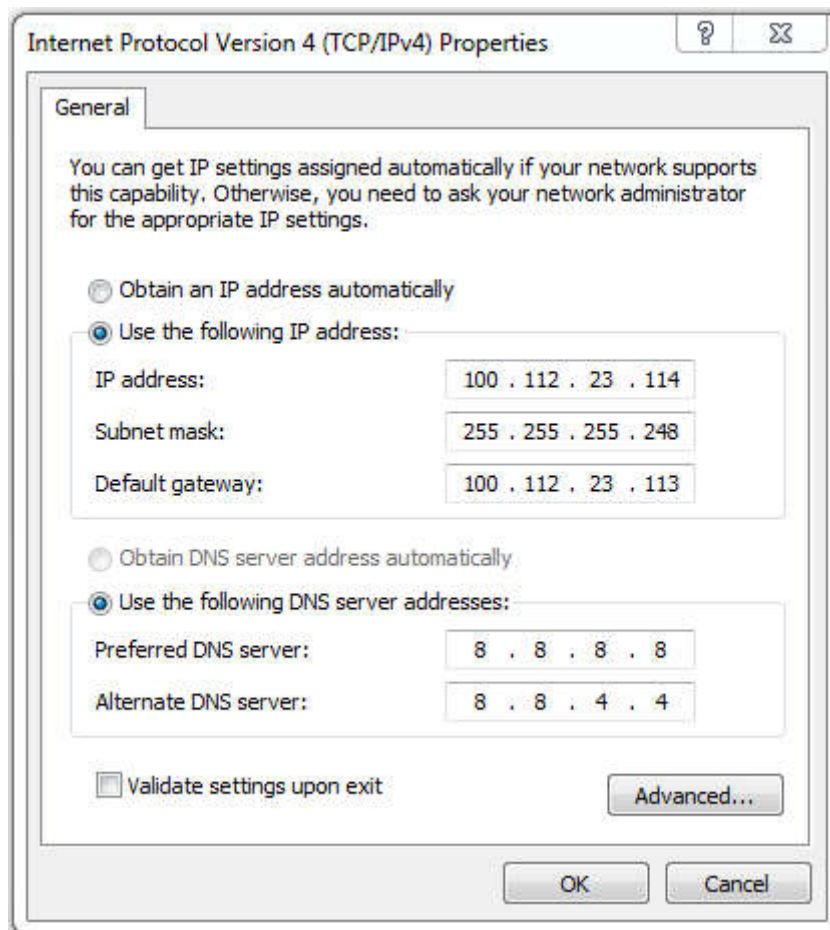
Subnet Mask- 255.255.255.248 (Subnet mask)

Railtel End IP- 100.112.23.113 (Default gateway)

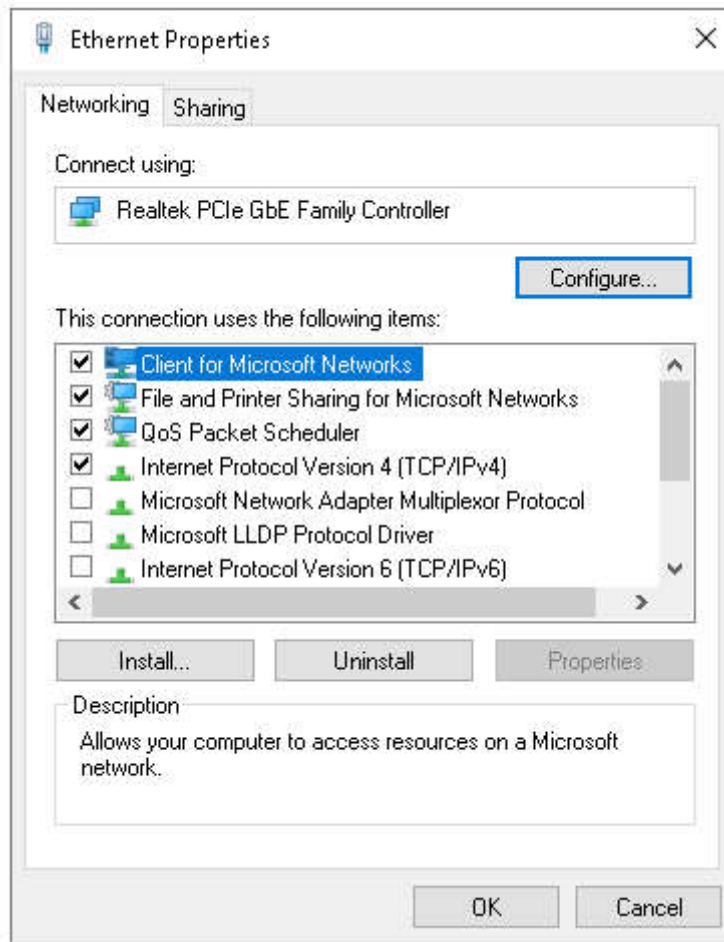
Preferred DNS server- 8.8.8.8

Alternate DNS server- 8.8.4.4

5. Select **“Use the following IP address”** radio button. Enter IP address, subnet mask, Default gateway as shown in the figure
6. Select **“Use the following DNS server addresses”** radio button. Enter DNS information as shown in the figure.
7. Click on OK button to save.

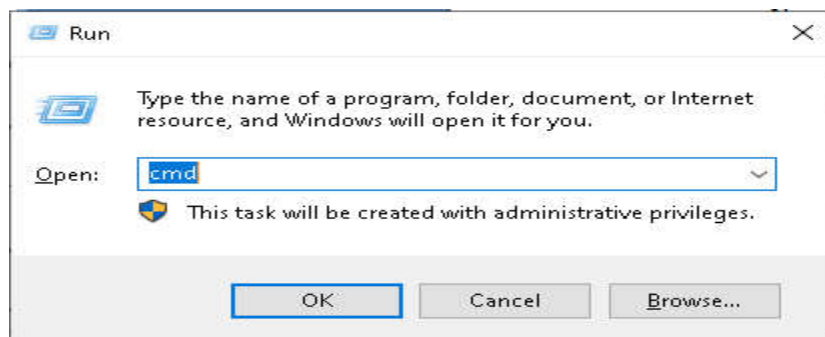


8. Ensure the check box for **“Client for Microsoft Networks”** is enabled as shown in the fig.



Testing:

1. Press “**Windows + R**” key from windows PC keyboard. Type “**cmd**” in the Run window and click ok.
2. “**ping 8.8.8.8 -t**” to check internet reachability.



```
Administrator: C:\WINDOWS\system32\cmd.exe - ping 8.8.8.8 -t
Reply from 8.8.8.8: bytes=32 time=38ms TTL=115
Reply from 8.8.8.8: bytes=32 time=45ms TTL=115

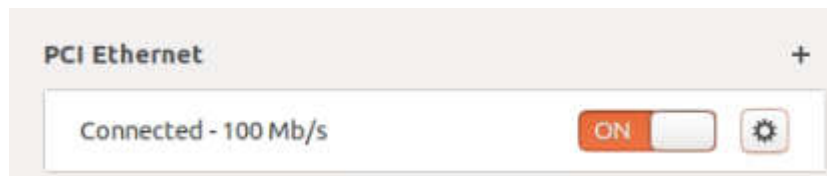
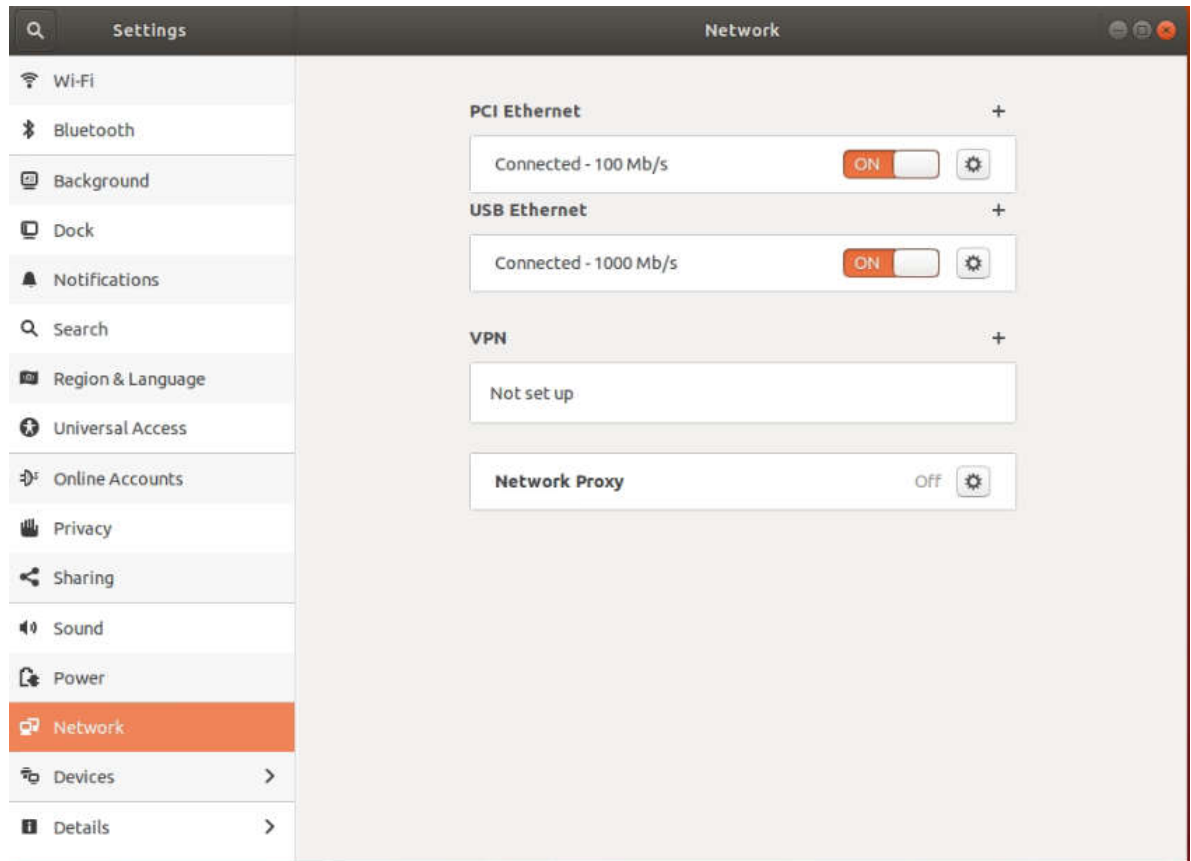
Ping statistics for 8.8.8.8:
    Packets: Sent = 2, Received = 2, Lost = 0 (0% loss),
    Approximate round trip times in milli-seconds:
        Minimum = 38ms, Maximum = 45ms, Average = 41ms
Control-C
^C
C:\Users\kgnanasekaran>ping 8.8.8.8 -t

Pinging 8.8.8.8 with 32 bytes of data:
Reply from 8.8.8.8: bytes=32 time=51ms TTL=115
Reply from 8.8.8.8: bytes=32 time=41ms TTL=115
Reply from 8.8.8.8: bytes=32 time=36ms TTL=115
Reply from 8.8.8.8: bytes=32 time=33ms TTL=115
Reply from 8.8.8.8: bytes=32 time=44ms TTL=115
Reply from 8.8.8.8: bytes=32 time=61ms TTL=115
Reply from 8.8.8.8: bytes=32 time=46ms TTL=115
Reply from 8.8.8.8: bytes=32 time=47ms TTL=115
Reply from 8.8.8.8: bytes=32 time=51ms TTL=115
```

2. Linux PC

1. Click on **Settings** then select **Network** and click on Ethernet interface to configure the IP as shown below.





2. Network Property window will open then select IPV4 tab and select IPV4 method as **“Manual”**.
3. Refer **“KFON End Office VLAN & IP Schema”** document and get the below details corresponding to the END Office.

For Example:

End Office Name: Kerala State Productivity Council, Kalamassery

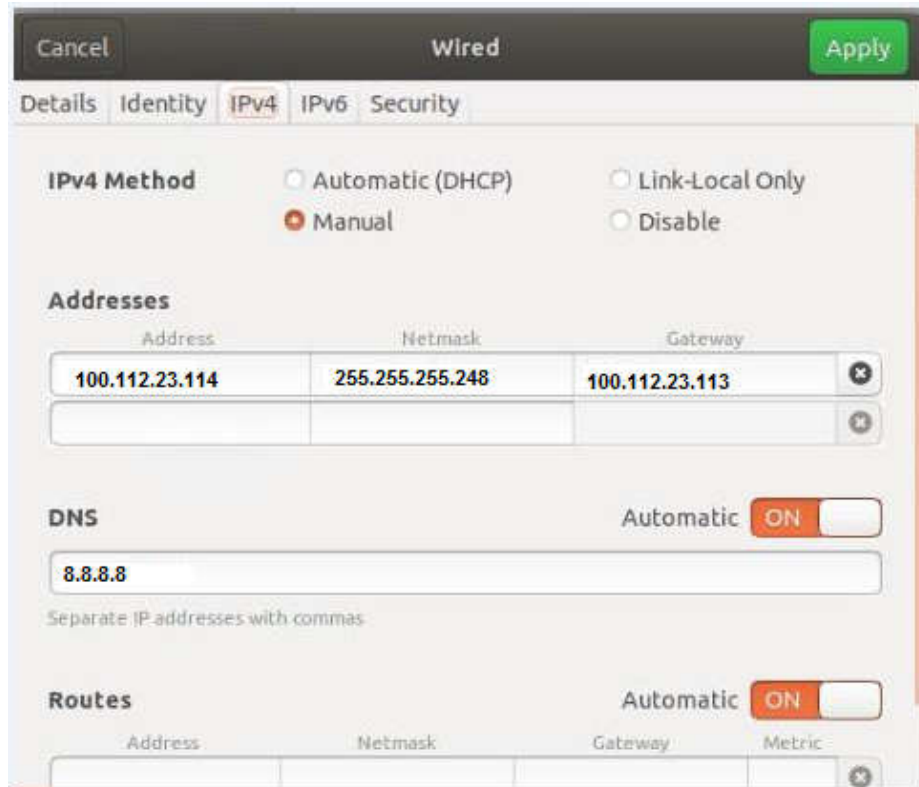
Customer End IP- 100.112.23.114 (Address)

Subnet Mask- 255.255.255.248 (Netmask)

Railtel End IP- 100.112.23.113 (Gateway)

DNS- 8.8.8.8

4. Enter the IP details (Address, Net mask, Gateway & DNS). Click on Apply button to save the configuration.



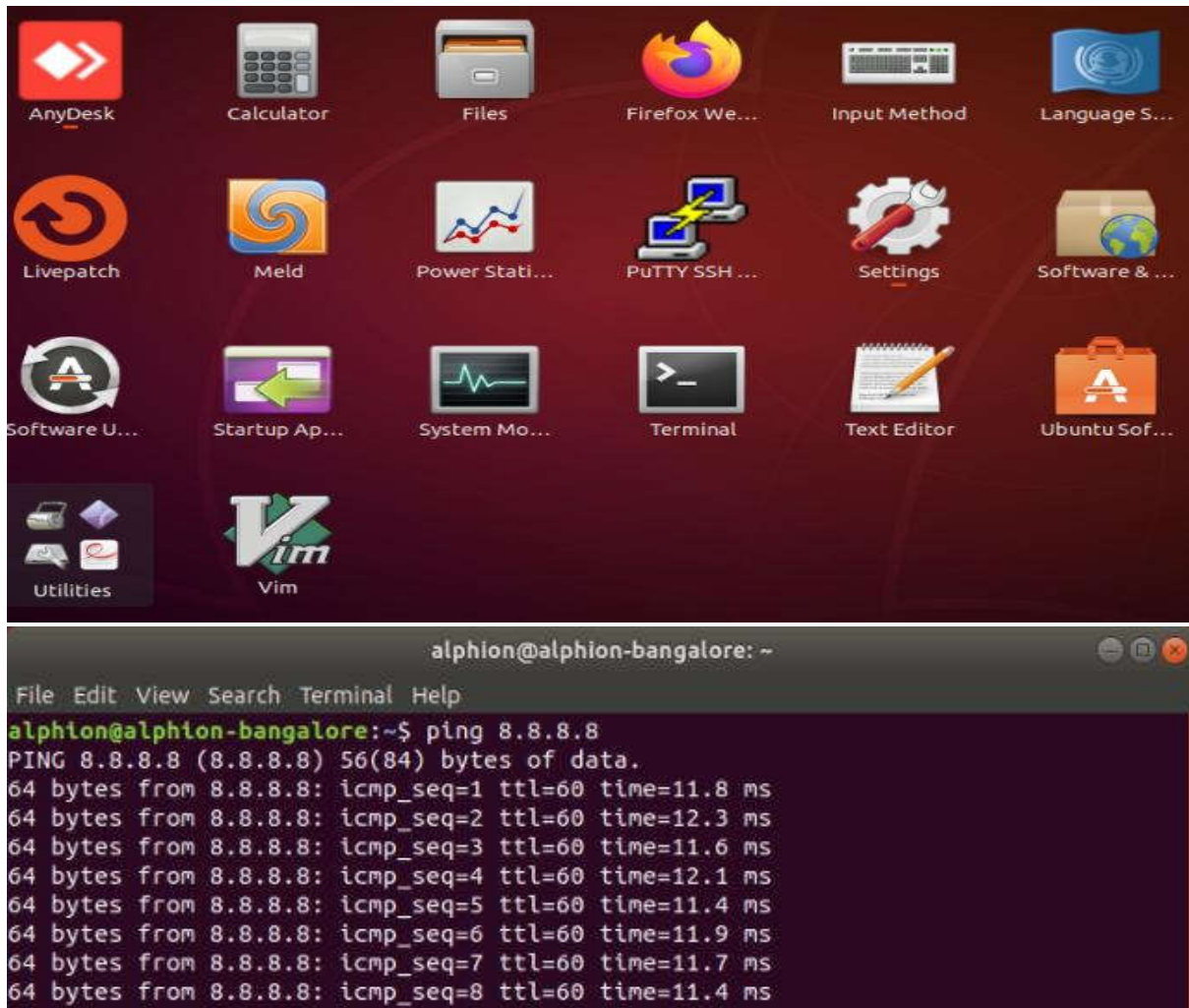
The screenshot shows the NetworkManager configuration window for a wired connection. The 'IPv4 Method' is set to 'Manual'. The 'Addresses' table contains one entry with IP 100.112.23.114, Netmask 255.255.255.248, and Gateway 100.112.23.113. The 'DNS' section is set to 'Automatic' and 'ON', with the IP 8.8.8.8 entered. The 'Routes' section is also set to 'Automatic' and 'ON'.

Address	Netmask	Gateway
100.112.23.114	255.255.255.248	100.112.23.113

Address	Netmask	Gateway	Metric

Testing:

1. open a “Terminal” window
2. “ping 8.8.8.8” to check internet reachability.



Helpdesk Support

1. If you are experiencing any issues related to IP configuration on End Offices PC in order to access internet, please contact our NOC helpdesk support team.
2. Contact for support at **04842911970**

-End of Document-